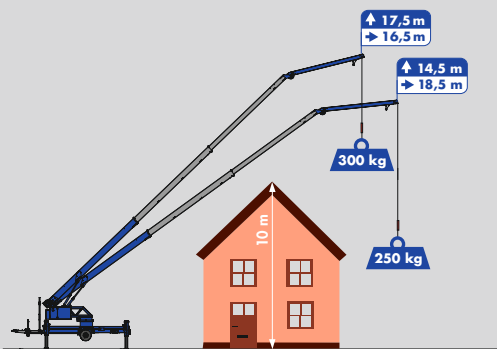


# K280



Hook height 25.5 m / Boom length 27.0 m

Max. capacity 800 kg

18.5 m Working range with 250 kg

optionally with battery-powered electric motor

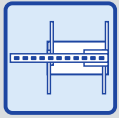


# K280

## Equipment



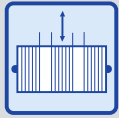
Klaas  
Boom system



H-Outriggers



Double derricking  
cylinders



Telescopic  
winch



Energy  
supply



Continuous  
rotation



Crane control  
system



Radio  
remote control



Drive  
concept



Self-drive  
mechanism



Accessory fix  
system (opt.)



battery-powered  
electric motor  
(opt.)

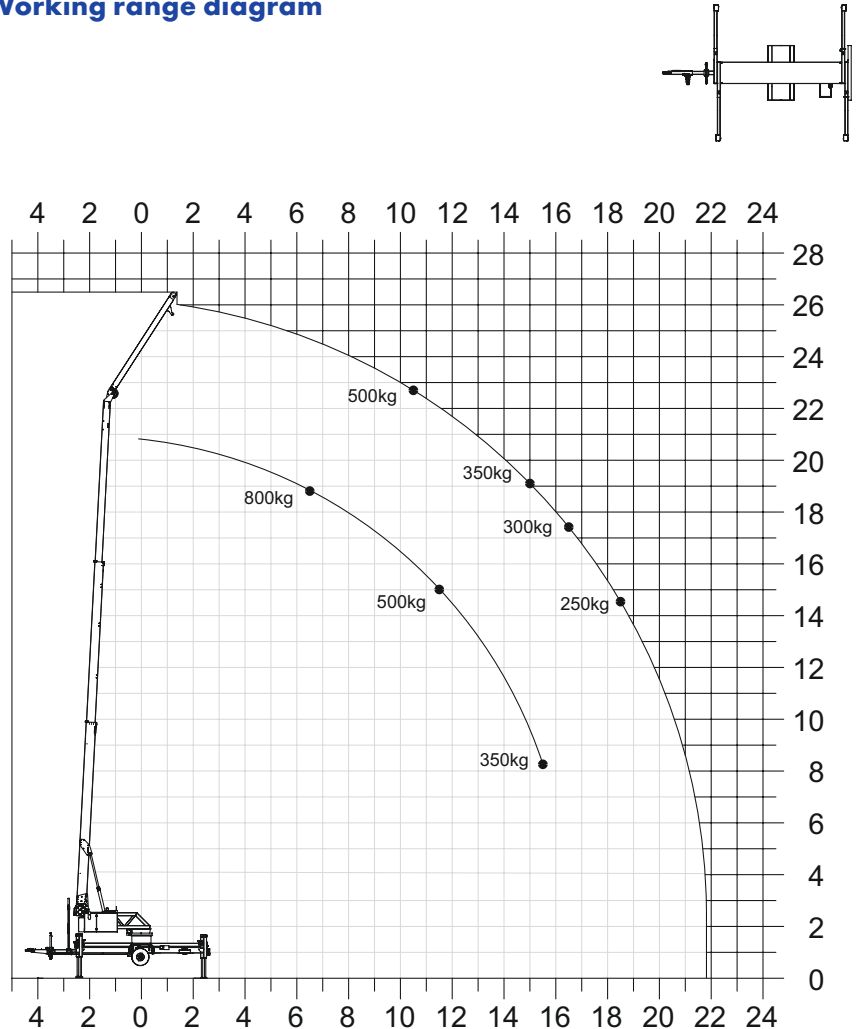
## Technical specifications

Hook load	800 kg
Hook height	25.50 m
Boom length	27.00 m
Outrigger width (min.)	3.88 m
Outrigger width (max.)	4.88 m
Winch capacity	800 kg
Boom (800 kg)	4.50 m
Vehicle dimensions	9.22x2.09x2.55 m
Towing capacity	2.8 t - 3 t

## Working range

Load	Working range	Height
800 kg	6.50 m	19.00 m
500 kg	11.50 m	15.00 m
350 kg	15.00 m	19.00 m
300 kg	16.50 m	17.50 m
250 kg	18.50 m	14.50 m

## Working range diagram



### KLAAS Service- & Vertriebs GmbH

Haselburger Damm 25 · D-59387 Ascheberg

Tel.: +49 (0) 2593 - 95 92 - 0

Fax: +49 (0) 2593 - 95 92 - 15

info@klaas.com